



SOUTHWOODS HEALTH

9371 East Market Street, Suite 2
Howland, Ohio 44484

IT'S NOT JUST ABOUT
THE TREATMENT,
BUT HOW YOU'RE
TREATED.

330.965.5090

SouthwoodsHealth.com/Howland
info@SouthwoodsHealth.com



Southwoods is proud to be locally owned and operated
by the Muransky family and area physicians.



SOUTHWOODS HEALTH

MRI & X-RAY IMAGING | SPINE | PAIN MANGEMENT | ORTHOPAEDICS



SOUTHWOODS HEALTH

NEW HOWLAND LOCATION OFFERS

COMPREHENSIVE, EXPERT CARE

Southwoods Health is proud to announce the opening of its newest location in Howland, bringing expert pain management, spine and orthopaedic services to Trumbull County. This location is the latest addition to Southwoods' expanding network of physicians, specialists and facilities throughout the tri-county area, offering patients improved access to the important care they need close to home.

Our Howland facility also introduces the first 3T MRI to Trumbull County, providing patients with the most advanced imaging technology available. When combined with the medical expertise of our specialists, this creates an unbeatable combination to accurately diagnose and treat a wide range of disorders. Most importantly, patient care is delivered with a focus on quality and compassion – something you'll find at all Southwoods locations.

📍 9371 East Market Street, Suite 2 | Howland, Ohio

📞 330-965-5090

🌐 SouthwoodsHealth.com/Howland

SERVICES INCLUDE:



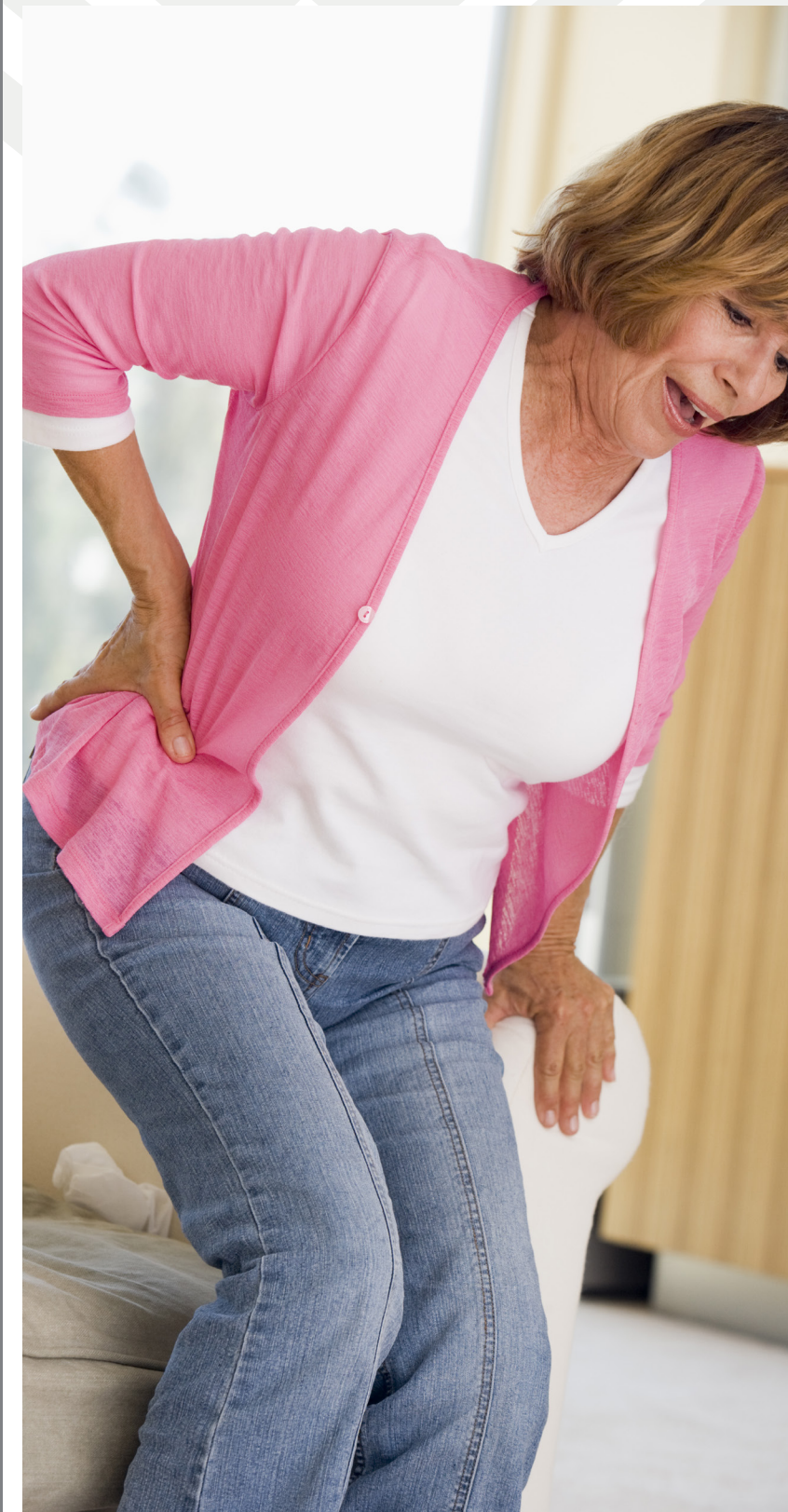
MRI & X-RAY IMAGING

SPINE



PAIN MANAGEMENT

ORTHOPAEDICS



[SOUTHWOODSHEALTH.COM/HOWLAND](https://SouthwoodsHealth.com/Howland)

WORLD-CLASS SPINE CARE

EXPERT PHYSICIANS

As hard-working people know, a life of physical labor can take a toll on the body. Occupations involving lifting and moving heavy objects, or even sitting at a desk all day can cause significant back pain. The health of your spine is critical to your overall well-being.

Southwoods Health has assembled a multidisciplinary team that can help. Our specialists collaborate to diagnose and treat complex disorders of the spine using the most recent advances in medicine. From conservative treatments through the latest minimally invasive surgical techniques, our comprehensive care model delivers timely and effective outcomes for patients.

This team includes:

- **Physical Medicine & Rehabilitation (PM&R) Physicians** specializing in the evaluation, diagnosis and treatment of disorders related to bones, muscles, joints and the central/peripheral nervous systems, including rehabilitation and recovery.
- **Pain Management Specialists** with in-depth knowledge of pain disorders who diagnose specific causes of pain and treat through the use of interventional procedures and the prescribing of pain medications.
- **Advanced Spine Surgeons** specializing in the diagnosis and treatment of conditions requiring surgery, which may include degenerative diseases and/or disorders of the neck and lower back.

Patients also have access to The Surgical Hospital at Southwoods, the region’s only CMS Five-Star rated hospital for clinical outcomes and patient satisfaction.

Southwoods’ world-class spine surgeons have dedicated their careers to helping those whose lives have been impacted by back pain.

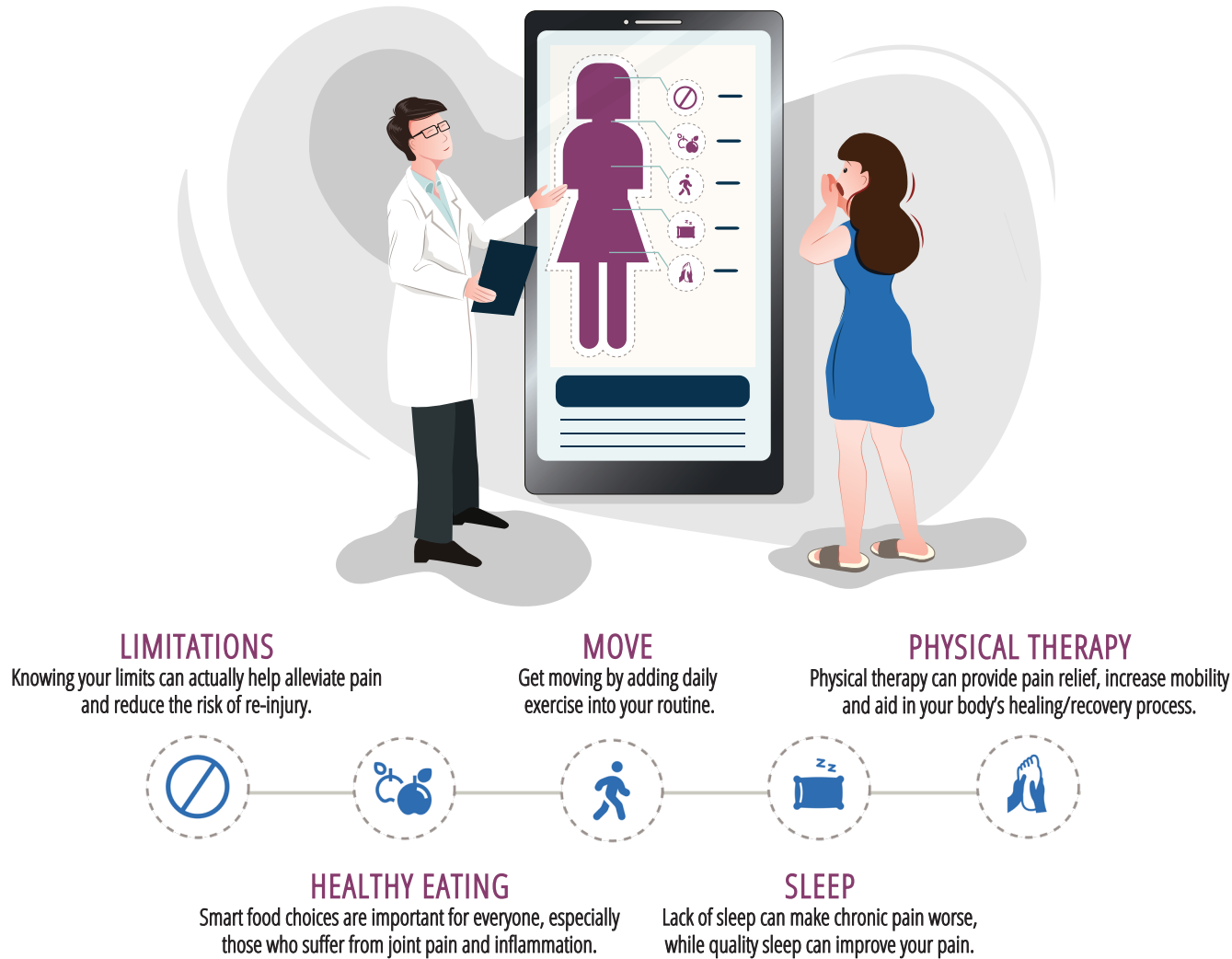
- FRANK GRISAFI, M.D.**
Boardman

KATHRYN JURENOVICH, D.O.
Howland

DOUGLAS MUSSER, D.O.
Boardman and Howland
- BRIAN SHANNON, M.D.**
Boardman and Hermitage

MICHAEL SHUMAKER, D.O.
Boardman

Every patient’s pain is different, which means the solution to that pain can be different as well.
SOME ALTERNATIVE TREATMENT OPTIONS INCLUDE:



HOWLAND LOCATION OFFERS
ONLY 3T MRI IN TRUMBULL COUNTY

MRI uses a magnetic field without radiation to produce high-resolution 3D images of the organs and structures inside the body. The amount of information provided by the exam is directly related to the strength of the magnetic field, and 3T MRI is the strongest magnet used in medicine today. Southwoods is proud to bring the only 3T MRI to Trumbull County.

This system’s capabilities ensure the highest quality images with the most enhanced anatomical detail – helping lead to more accurate diagnoses.

Additional benefits include:

- Reduced scan times
- Less noise
- Largest, widest opening
- Metal reduction software for patients with implants
- Non-contrast capabilities

Our imaging services in Howland include both 3T MRI and digital X-ray services, providing clear, sharp and detailed images in the convenience of a single location.

MEET OUR
HOWLAND DOCTORS



MICHAEL DASU, D.O.
Dr. Dasu is the latest addition to the Southwoods Pain Management team. He is fellowship trained and board certified in both Pain Management and Anesthesiology, enabling him to provide comprehensive, effective care to patients.

COMMON CONDITIONS TREATED

- | | | |
|-----------------------------|-------------------------|-----------------------------|
| • Arthritis and Joint Pain | • Diabetic Neuropathy | • Post Laminectomy Syndrome |
| • Back and Neck Pain | • Extruded Discs | • Sacroiliac Joint Pain |
| • Chronic Pain | • Neck and Back Pain | • Sciatica |
| • Compression Fracture | • Occipital Neuralgia | • Spinal Stenosis |
| • Degenerative Disc Disease | • Peripheral Nerve Pain | • Trigeminal Neuralgia |



STUART DREW, D.O.
Dr. Drew is an orthopaedic surgeon, specializing in Hand & Upper Extremity. In addition to our new Howland location, he also sees patients at the Southwoods Pain & Spine Center on the main campus in Boardman.

COMMON CONDITIONS TREATED

- | | | |
|-------------------------------|-------------------------|------------------------------|
| • Arthritis | • Elbow Injuries | • Shoulder Injuries |
| • Carpal Tunnel Syndrome | • Fractures | • Sports Injuries |
| • Cubital Tunnel Syndrome | • Hand Injuries | • Tendon and Nerve Injuries |
| • Cartilage or Ligament Tears | • Peripheral Nerve Pain | • Trigger Finger |
| • Dislocations | • Rotator Cuff Tears | • Wrist Injuries and Sprains |



KATHRYN JURENOVICH, D.O.
Dr. Jurenovich is part of Southwoods’ expert team of Spine Surgeons. She is fellowship trained, and uses the latest advanced approaches and minimally invasive techniques to help patients living with persistent back pain.



DOUGLAS MUSSER, D.O.
Dr. Musser is also part of the world-class spine team at Southwoods. He is fellowship-trained in both spine and neurological surgery. Dr. Musser sees patients in Howland and the Southwoods Pain & Spine Center in Boardman.

COMMON CONDITIONS TREATED

- | | | |
|-----------------------------|-----------------------|----------------------------------|
| • Adult Scoliosis | • Disc Extrusion | • Osteoarthritis |
| • Back Pain | • Disc Protrusion | • Radiculopathy or Pinched Nerve |
| • Cervical Myelopathy | • Fractured Vertebrae | • Sciatica |
| • Cervical Stenosis | • Herniated Disc | • Spinal Stenosis |
| • Degenerative Disc Disease | • Neck Pain | • Spondylolisthesis |